

## THANK YOU TO TODAY'S SPONSORS

### McKnight Foundation Olympus

#### FOUNDATION MISSION

Bedford Stem Cell Research Foundation is a biomedical institute which exists to conduct stem cell and related research for diseases and conditions which currently have no effective methods of treatment or cure.

#### THE POWER OF PRIVATE FUNDING

The tax-exempt status granted to public charities highlights the U.S. Government's belief that taxpayers have the right to directly support activities they feel are important. To advance the treatment opportunities, to grow its community of scholars, and to enlarge the potential for miracles, the Foundation needs the help of private benefactors to raise funds.

#### Please mail contributions to:

Bedford Stem Cell  
Research Foundation  
PO Box 1028  
Bedford, MA 01730

Please enclose the name  
and address of anyone you  
would like to be notified of  
your contribution or added  
to our mailing list.

**Donate Online at:**  
[www.bedfordresearch.org](http://www.bedfordresearch.org)

#### BOARD OF TRUSTEES

Alan S. Geisner, Esq *Chairman of the Board*  
PARTNER, SUGARMAN, ROGERS, BARSHAK AND COHEN

Jose Cibelli, DVM PhD  
PROF. OF ANIMAL BIOTECHNOLOGY, MICHIGAN STATE UNIVERSITY

Lawrence R. Jones CEO, JONES MARKETING SERVICES

Robert L. Kaufmann, MD  
REPRODUCTIVE ENDOCRINOLOGIST

Sean Kealy, Esq BOSTON UNIVERSITY SCHOOL OF LAW

John D. Lee, MEd EXTENSION EDUCATION

Alan Mayer ARCHITECT

Susan L Moss, JD, PhD  
DIRECTOR OF EQUITY & DIVERSITY

Anil Purohit, PhD DIRECTOR,  
PROGRAMS FOR AIDS TESTING AND AWARENESS

Margaret S. Wray, BSN PSYCHIATRIC NURSE

#### ETHICS ADVISORY BOARD

Arthur Applbaum, PhD *Chairman of the Board*  
PROF. OF ETHICS AND PUBLIC POLICY,  
KENNEDY SCHOOL OF GOVERNMENT

Stanley J. Bodner, MD INFECTIOUS DISEASE SPECIALIST

Kenneth A. Burry, MD PROF. OF OBSTETRICS AND GYNECOL  
OREGON HEALTH SCIENCES UNIVERSITY

Norman Daniels, PhD PROF. OF ETHICS & PUBLIC HEALTH,  
HARVARD SCHOOL OF PUBLIC HEALTH

Robert D. Truog, MD PROF. OF MEDICAL ETHICS AND  
PEDIATRICS, CHILDREN'S HOSPITAL, HARVARD MEDICAL SCHOOL

Daniel Wikler, PhD PROF. OF ETHICS AND PUBLIC HEALTH,  
HARVARD SCHOOL OF PUBLIC HEALTH

#### SCIENTIFIC COMMITTEE

Carol M. Warner, PhD *Chairman*  
PROF. OF BIOLOGY, NORTHEASTERN UNIVERSITY

#### ABOUT THE DIRECTOR

*Dr. Ann Kiessling has pursued her dual interest in virology and reproductive biology since receiving her doctorate from Oregon State University. She has published over one hundred scientific papers covering both areas of research and is Associate Professor of Surgery at Harvard Medical School.*



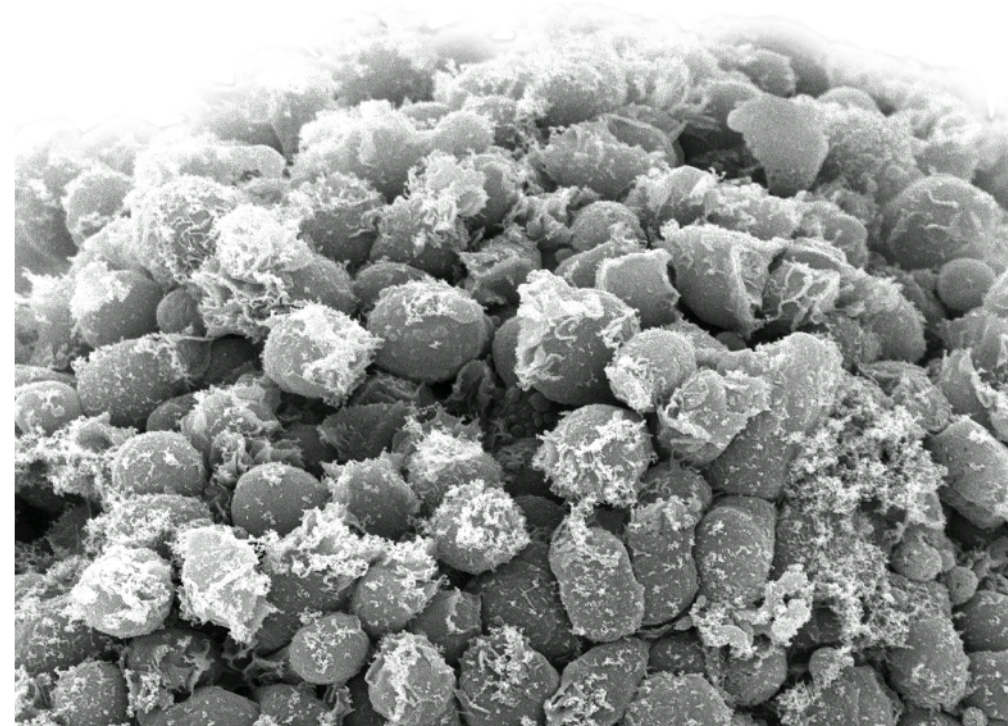
#### BEDFORD STEM CELL RESEARCH FOUNDATION

PO BOX 1028, Bedford, MA 01730  
Main Office: 781-718-7896  
Fax: 781-275-5970  
Email: [info@bedfordresearch.org](mailto:info@bedfordresearch.org)

# THE SEVENTH ANNUAL Activated Egg SYMPOSIUM

November 6, 2009

Sponsored by the BEDFORD STEM CELL RESEARCH FOUNDATION



Friday, November 6, 2009  
8:30 AM - 7:30 PM  
Henderson House  
Weston, MA

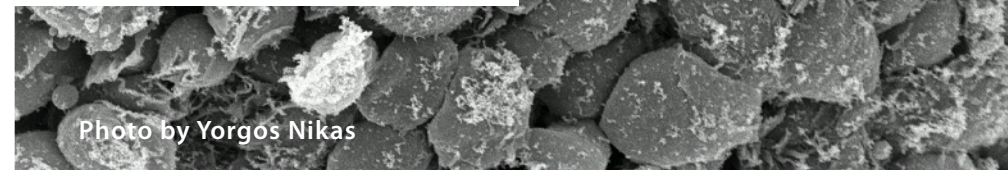


Photo by Yorgos Nikas

# THE Activated Egg SYMPOSIUM

November 6, 2009

**8:20 REGISTRATION & CONTINENTAL BREAKFAST**

**8:50 WELCOME**

**ANN A. KIESSLING, PhD**

Director, Bedford Stem Cell Research Foundation

Associate Professor of Surgery, Harvard Medical School

**9:00 KEYNOTE ADDRESS**

Renee A. Reijo Pera, PhD

Professor, Obstetrics and Gynecology

Director, Stanford's Center for Human Embryonic Stem Cell Research and Education

***"Human Embryo Development and Pluripotent Stem Cells"***

**10:00 HAIFAN LIN, PhD**

Professor of Cell Biology, Director, Yale Stem Cell Center

***"Stem Cells, Small RNAs, and Self-Renewal of the Germline."***

**10:40 COFFEE BREAK**

*"Omne Vivum Ex Ovo"*

- William Harvey, 1620

**11:00 GARY STEIN, PhD**

Professor and Chairman,

Department of Cell Biology, University of Massachusetts

***"Transcription Factor Mediated Epigenetic Control of Cell Growth Phenotype"***

**11:40 POSTER SESSION A**

**12:10 LUNCH**

**1:30 JESSE MAGER, PhD**

Assistant Professor, Veterinary & Animal Sciences,  
University of Massachusetts, Amherst

***"Essential functions of Yin-Yang<sup>1</sup> during oogenesis and preimplantation development."***

**2:10 REN HE XU, MD, PhD**

Associate Professor, Department of  
Genetics & Developmental Biology,  
University of Connecticut Health  
Center

***"A Neglected Role of bFGF in Supporting Culture of Human Pluripotent Stem Cells"***

**3:00 COFFEE BREAK**

**3:20 LAURA GRABEL, PHD**

Professor of Science in Society, Wesleyan University

***"From Embryonic Stem Cell to Neuron, with Stops Along the Way"***

**4:10 ANN A. KIESSLING, PHD**

Director, Bedford Stem Cell Research Foundation

Associate Professor of Surgery, Harvard Medical School

***"8-Cell Human Embryos: the Penultimate Pluripotent Cells"***

**4:50 CONCLUSIONS**

**5:00 COCKTAILS & POSTER SESSION B**

**6:00 DINNER SPEAKER**

**I. GLENN COHEN, JD**

Assistant professor at Harvard Law School

Co-Director of the Petri-Flom Center for Health Law Policy,  
Biotechnology and Bioethics.

*"When you start with a portrait and search for a pure form, a clear volume, through successive eliminations, you arrive inevitably at the egg."*

- Pablo Picasso